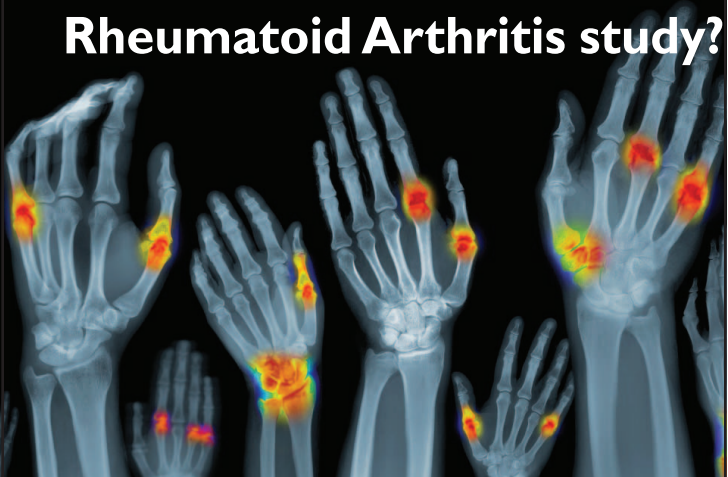


# Interested in our Rheumatoid Arthritis study?



**If you're taking methotrexate for RA, ask your doctor about our clinical research study.**

We are conducting a rheumatoid arthritis (RA) clinical research study to test the safety and effectiveness of an investigational drug for RA. This study will enroll qualifying participants with active RA who have not responded successfully to RA treatments.

**You may be able to participate if you:**

- Are at least 18 years old
- Have active rheumatoid arthritis (RA)
- Have been taking methotrexate

Study staff at the clinic will review additional criteria and other study information with you at your first visit. Study participants will not be charged for study-related office visits or medical evaluations.

For more information about this RA study, please contact:

**Clinical Pharmacology Study Group  
UMASS Memorial City Campus  
26 Queen Street  
Worcester, MA 01610  
Phone: 508-755-0201  
[info@cpsgma.com](mailto:info@cpsgma.com)**